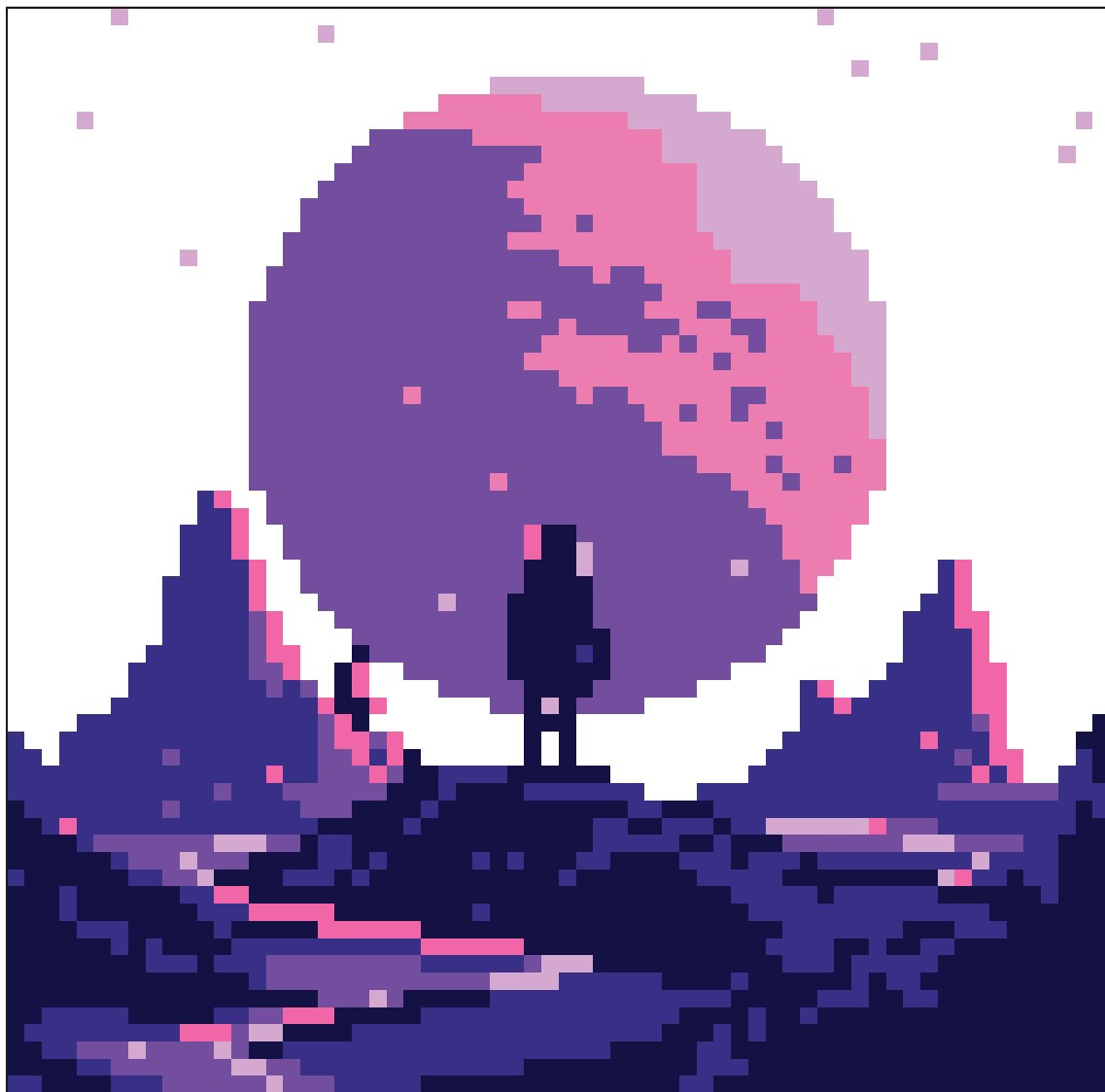




CROSS STITCH PATTERN

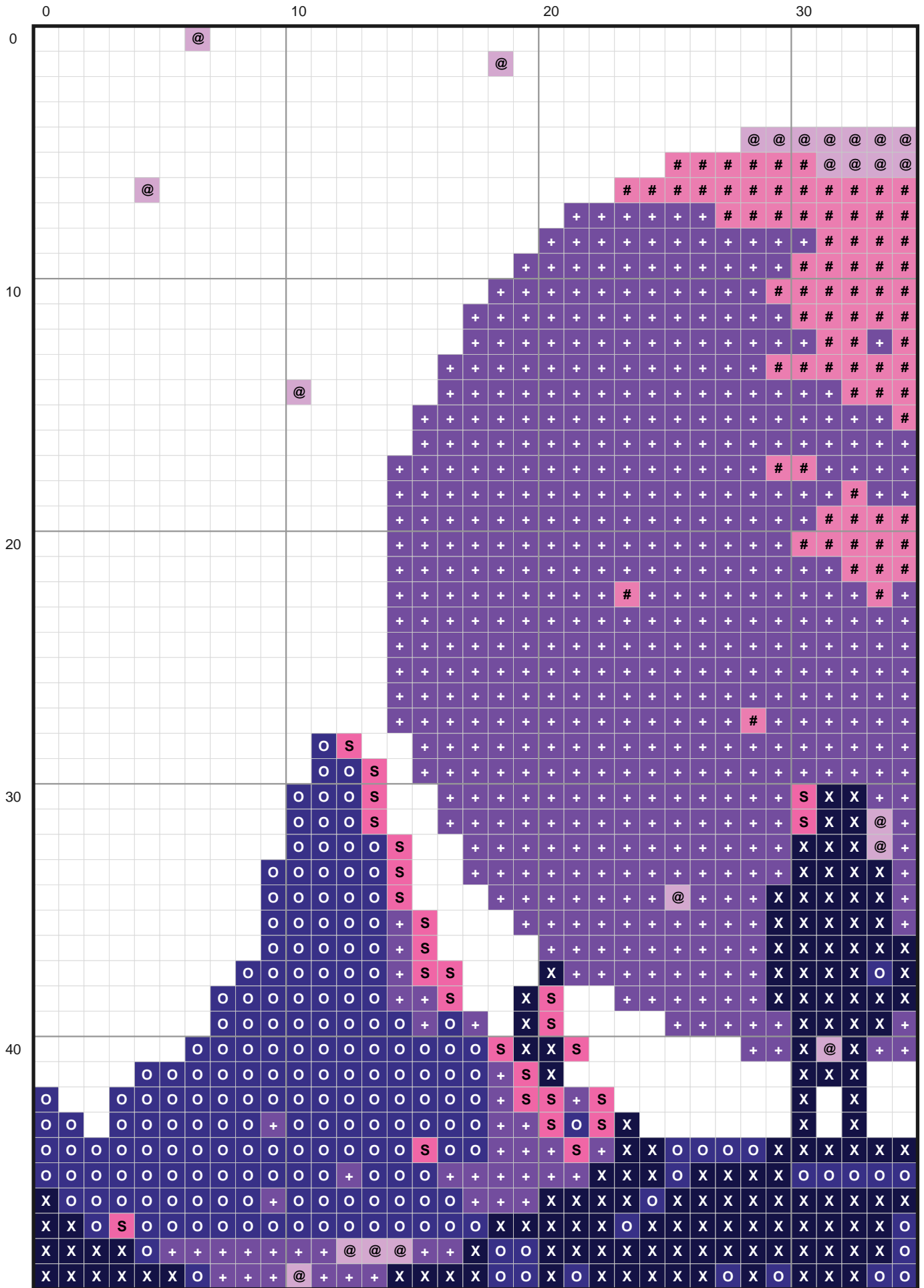
## pattern\_15



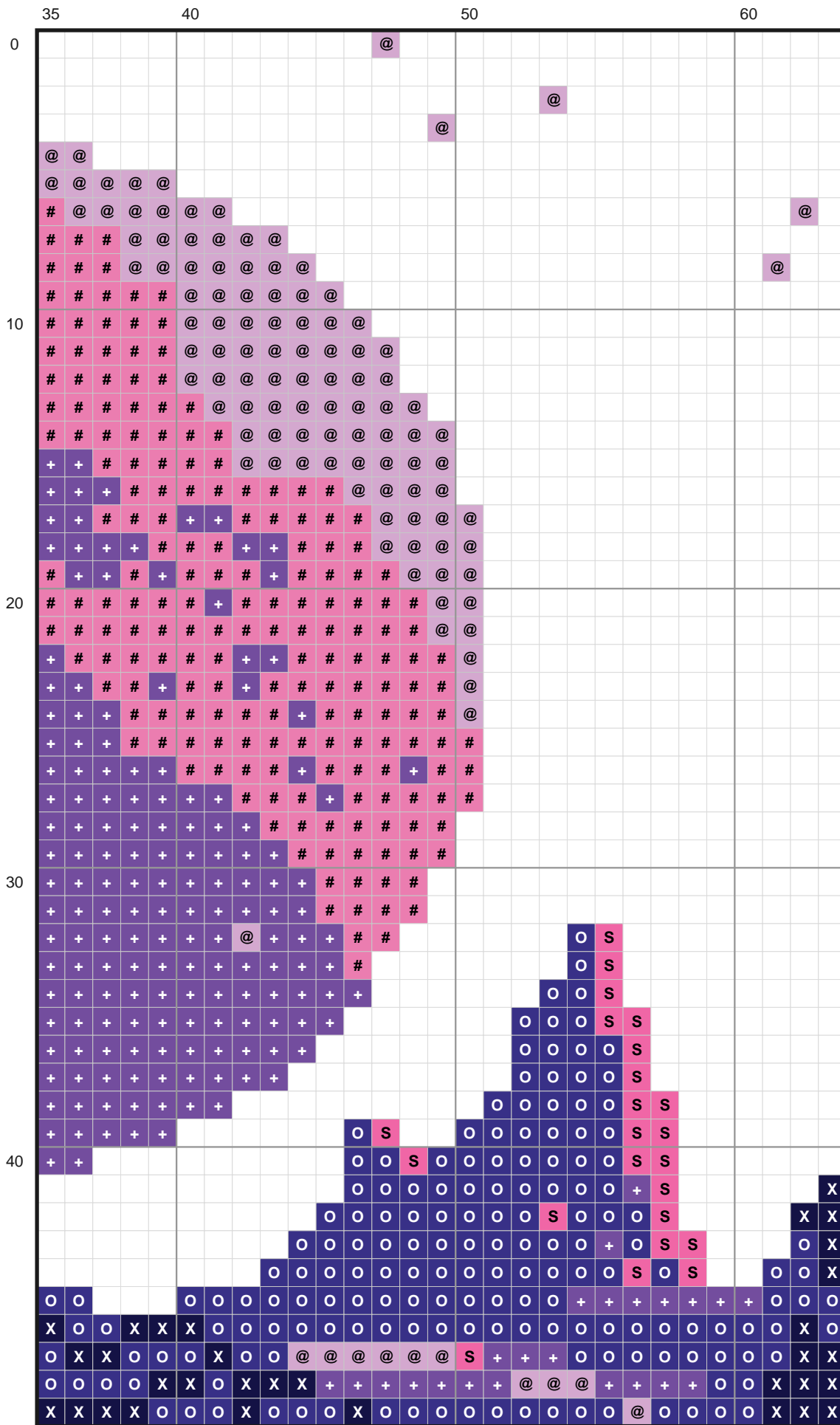
<b>64x63</b> SIZE	<b>6</b> COLOURS	<b>2,568</b> STITCHES	<b>Medium</b> DIFFICULTY
----------------------	---------------------	--------------------------	-----------------------------

Finished size on **14-count Aida**: 4.6" (11.6cm) wide x 4.5" (11.4cm) tall

# CHART 01



# CHART 02







**14** COUNT  
4.6" x 4.5" (12cm x 11cm)

pattern\_15

DMC	Name	Symbol	Stitches
 208	Lavender Vry Dk	+	789
 820	Royal Blue Vry Dk	X	666
 333	Blue Violet Vry Dk	O	612
 3608	Plum Vry Lt	#	268
 153	Violet Vry Lt	@	157
 603	Cranberry	S	76

## Size Reference

---

<b>11-count Aida</b>	5.8" x 5.7" (14.8cm x 14.5cm)
<b>14-count Aida</b>	4.6" x 4.5" (11.6cm x 11.4cm)
<b>16-count Aida</b>	4.0" x 3.9" (10.2cm x 10.0cm)
<b>18-count Aida</b>	3.6" x 3.5" (9.0cm x 8.9cm)