



CROSS STITCH PATTERN

pattern_19



64x59 SIZE	9 COLOURS	3,443 STITCHES	Medium DIFFICULTY
----------------------	---------------------	--------------------------	-----------------------------

Finished size on **14-count Aida**: 4.6" (11.6cm) wide x 4.2" (10.7cm) tall

CHART 01

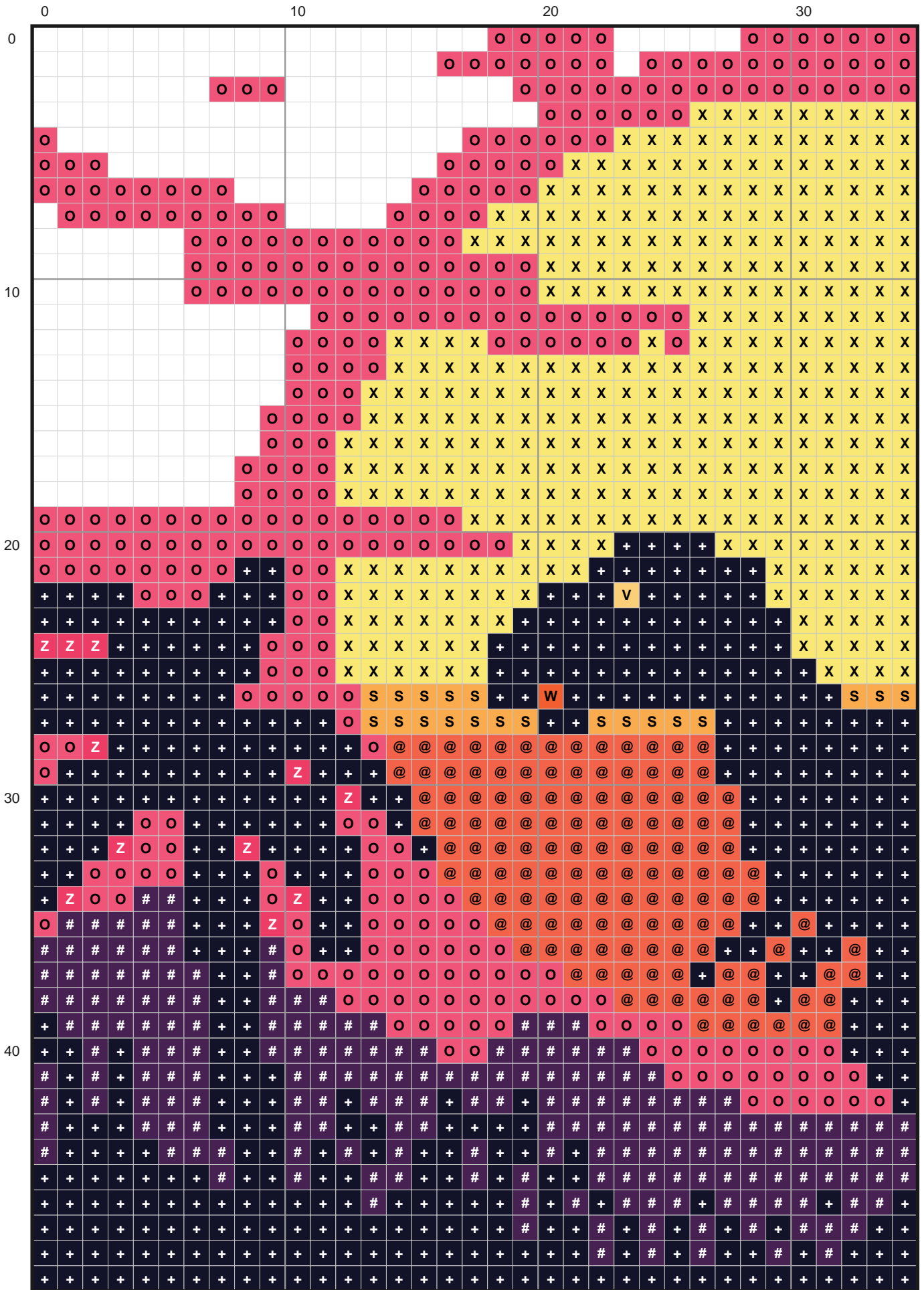
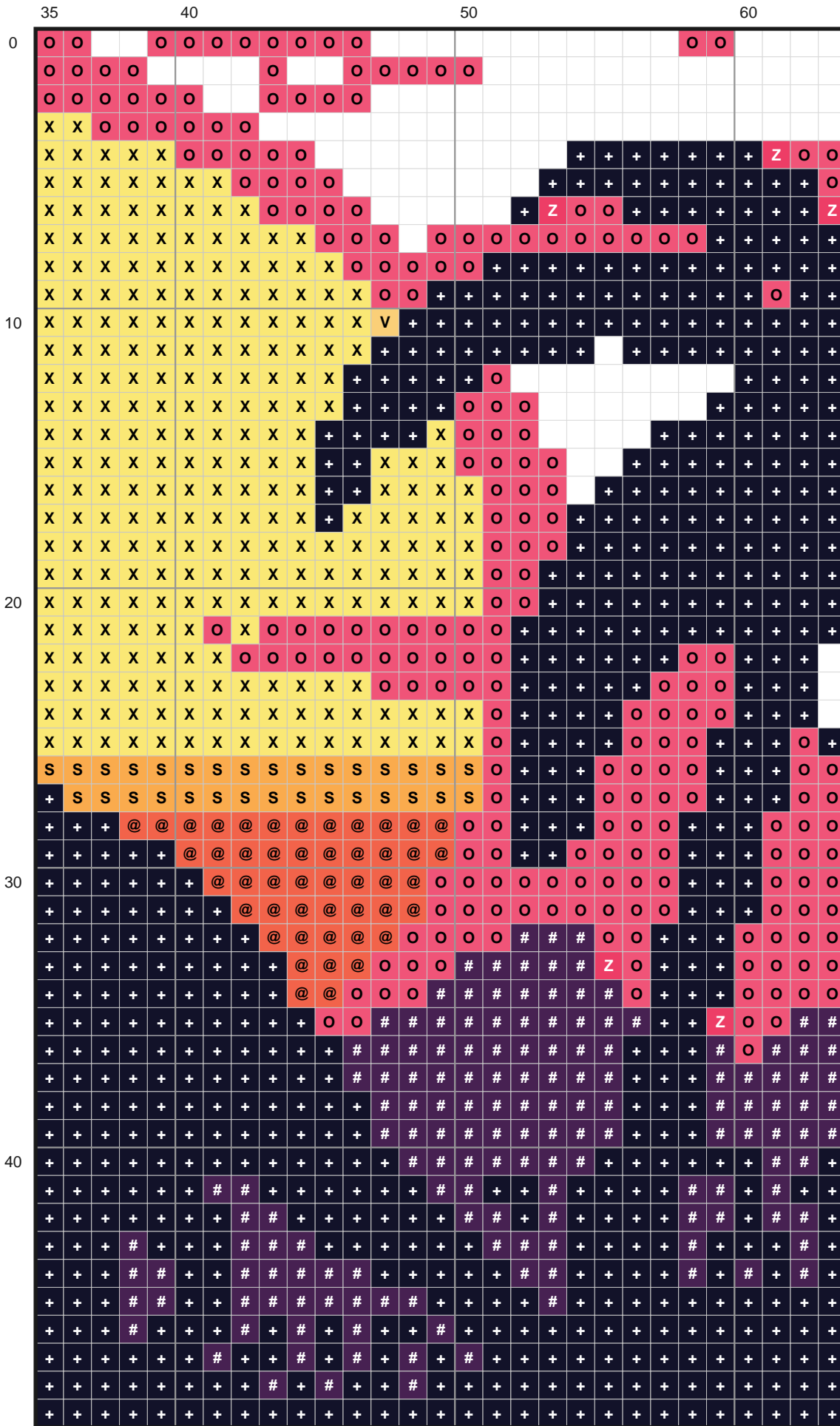



CHART 02



14 COUNT
4.6" x 4.2" (12cm x 11cm)

pattern_19

DMC	Name	Symbol	Stitches
 823	Navy Blue Dk	+	1651
 017	Yellow Plum	X	625
 3833	Raspberry Lt	O	571
 327	Violet Dk	#	346
 922	Copper Lt	@	180
 725	Topaz Med Lt	S	51
 335	Rose	Z	16
 3822	Straw Lt	V	2
 3853	Autumn Gold Dk	W	1

Size Reference

11-count Aida	5.8" x 5.4" (14.8cm x 13.6cm)
14-count Aida	4.6" x 4.2" (11.6cm x 10.7cm)
16-count Aida	4.0" x 3.7" (10.2cm x 9.4cm)
18-count Aida	3.6" x 3.3" (9.0cm x 8.3cm)